

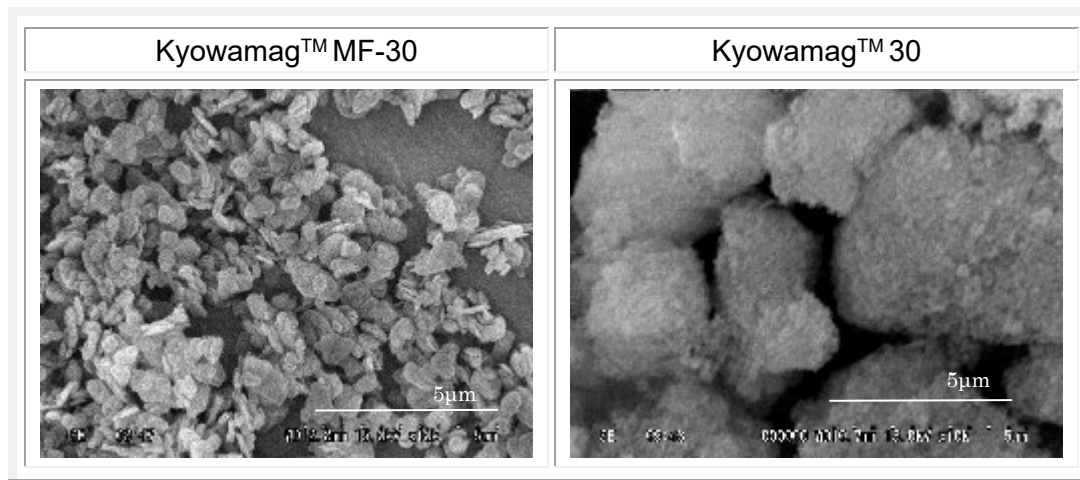
## Kyowamag™ MF-30

### 【Typical Data】

		Kyowamag™ MF-30	Kyowamag™ 30
MgO	(%)	99.6	97.8
CaO	(%)	0.03	0.60
Fe (Iron)	(ppm)	11	170
Specific Surface Area(BET)	(m <sup>2</sup> /g)	25	44

\* Compared with Kyowamag™ 30

### 【SEM】



'Kyowamag' is a trademark of Kyowa Chemical Industry Co., Ltd., registered in many countries.

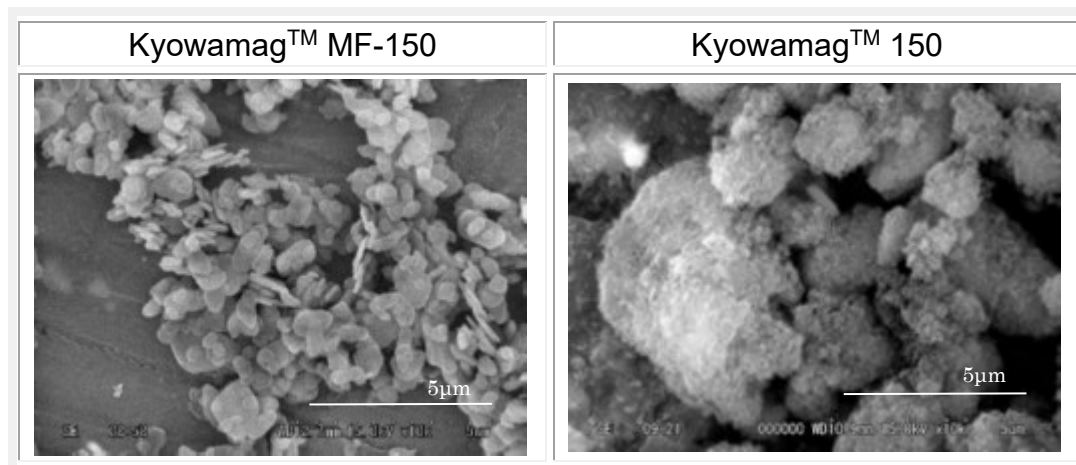
## Kyowamag™ MF-150

### 【Typical Data】

		Kyowamag™ MF-150	Kyowamag™ 150
MgO	(%)	99.5	97.9
CaO	(%)	0.03	0.52
Fe (Iron)	(ppm)	21	161
Specific Surface Area(BET)	(m <sup>2</sup> /g)	119	141
Particle Size Distribution			
% 10	(μm)	0.39	2.64
% 50	(μm)	0.71	6.94
% 90	(μm)	1.47	29.2

\* Compared with Kyowamag™ 150

### 【SEM】



'Kyowamag' is a trademark of Kyowa Chemical Industry Co., Ltd., registered in many countries.